



Cornell Cooperative Extension
Wyoming County

CCE Wyoming County
2024 Annual Report



“Cornell Cooperative Extension is an employer and educator recognized for valuing AA/EEO, Protected Veterans, and Individuals with Disabilities and provides equal program and employment opportunities”

Program Goals

Wyoming County Ag Program

- **Enhance Profitability and Productivity:** Boost the economic growth of Wyoming County by increasing the profitability and productivity of family operations, farms, and agribusinesses.
- **Improve Operational Efficiency and Food Preservation:** Enhance the operational efficiency of homestead and agribusiness enterprises to improve food preservation quality and product safety.
- **Ensure Access to Crucial Information:** Provide access to information that supports market innovations, agricultural program participation, and regulatory compliance.
- **Strengthen Community Connections:** Enhance agricultural education and community engagement.



Wyoming County 4-H Program

- **Immerse Youth in Food Security:** Provide hands-on learning experiences in agricultural production, food processing, technology, and agribusiness management to establish a solid foundation in food security.
- **Offer Life Skill Development:** Create and provide affordable or accessible opportunities for youth to develop life skills through informal education in areas such as animal science, economic development, entrepreneurship, leadership, presentation skills, dietetics, food science, crafts, agricultural technology, mechanical skills, agricultural innovation, and outdoor education.
- **Foster Community and Connectedness:** Promote youth engagement, teamwork, collaborative leadership, and lifelong growth through partnerships that strengthen community bonds.



4-H YOUTH DEVELOPMENT PROGRAM YEAR

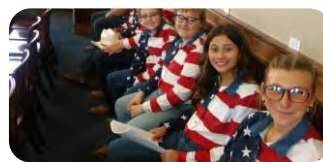
Head, Heart, Hands, and Health

Wyoming County 4-H Staff:

- 75+ in-person educational opportunities.
- 6.25 countywide opportunities for informal youth education per month.
- Individual youth contacts through these events exceeded 1,000

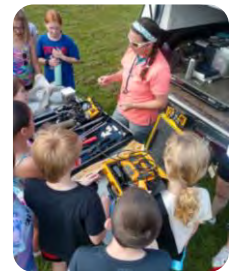
4-H Members:

- 606 Enrolled youth members ages 8-18 years
- 124 Enrolled clover bud members ages 5-7 years
- 150 Enrolled adult volunteers serving as club leaders, committee members, and general volunteers
- 52 Active 4-H clubs focusing on project areas and community building



Ag in the Classroom

- We serve Perry, Warsaw, Wyoming, and Attica Central School Systems.
- End-of-the-year Ag. Days
- Kindergarten through 5th grade, and 12th grade special education
- Average 300 students per school
- A range of 46-92 lessons per school, except Attica
- NYS A&M Dairy Grant, School Support



Animal Science

- 109 Youth dairy members exhibited 148 animals
- 152 Youth beef, goat, sheep, and swine members exhibited 200 non auction animals
- 62 Youth exhibited 82 horses within English, Gymkhana, and Western divisions
- 79 Youth exhibited 140 poultry and rabbit projects



\$467,300
Total 4-H Animal Sales
 Livestock total sales.

196
Youth Participants
 4-H Meat Animal Auction.

Machinery

- National Safe Tractor & Machinery Operation Program for youth ages 14 and over
- Small engines/tractor maintenance and safety programming for youth ages 10-14.
- Local business support included: Java Farm Supply, Kelly's Garage, Larry Romance Garage, Monroe Tractor, and help from Bocce's instructor, Shawn Baker with small engine management.



Food & Consumer



- 849 projects displayed in the 4-H/FFA Youth Building at Wyoming County Fair.
- 193 Cloverbud exhibits received participation ribbons.
- Over 225 youth participated in contests.
- More than 300 cones of ice cream served on dairy day.
- \$7,600 raised at the cake and pie auction for the Food and Consumer Science program.

Ag Programs

- Maple/Maple Syrup, Honeybees/ Honey
- Food Preservation and Processing
- Farm Safety
- Specialty Crops and Season Extension
- Community Gardens and Outreach
- Natural Resources
- Home Gardens and Soil Testing
- Pesticide Certification
- Plant, Insect and Disease Diagnostic

2024 Overview

- 2024 Agriculture Program **189 Enrollees**
- Northwest New York Dairy Livestock and Field Crops Team **47 Enrollees**
- CCE Wyoming 2024 Classes and Workshops **518 Participants**
- 2024 Public Outreach Classes and Event Participation **700-800 participants**



Maple & Honey – 355 participants

December 2023 Maple School

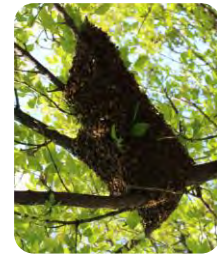
- 55-60 attendees
- Learning and trade show
- Types of classes:
 - Beginner maple
 - Value-added food science
 - Invasive species
 - Promotion and marketing
 - Lifting sap w/ vacuum pumps
 - Grading and marketing requirements
 - Funding opportunities
 - Basics of reverse osmosis
- The cost to the public was \$15

2024 Maple Events

- Partnership with Wyoming County Maple Producers to promote event on confectionery
- Aaron Wightman for a Fall maple update on October 19.

2024 Bee Events

- Bee swarms
- Beekeeper meet-up
- Fair booth volunteer coordination



Food Preservation

- Food Preservation Series
- Three sessions focused on home canning jams, pickles, and tomatoes.
- 10-12 attendees per class, learning food safety basics.
- Participants prepared, processed, and took home canned goods.



High Tunnel and Vegetable Trial



- Gardening Open House Workshop
- Gardening in small spaces, raised bed utilization, and first-year participation in the Cornell Vegetable Variety Trial.
- 39 attendees explored high tunnel production.
- Participants sampled dishes made from crops grown in the beds. Crops Donated to Local Food Pantry
- Master Gardener Plant Sale and Community Outreach
- Warsaw Seed Library

NWNY Dairy Highlights

Beef Quality Assurance Training

A Beef Quality Assurance training was held in Wyoming County, certifying 15 local producers. The program covers essential topics like animal handling, biosecurity, and herd health. Participants discussed using grant funds for a cattle handling system.

Dairy Day 2024

The CCE NWNY Dairy Day in February attracted 13 local dairy and beef farmers. The event focused on sustainable practices and featured discussions on methane reduction and workforce development. Participants shared insights and expressing interest in further education.

Pest Management

The Crop Alert initiative provided weekly updates for pest monitoring of pheromone traps which tracked Black Cutworm and Common Armyworm, helping farmers make timely decisions to protect their crops from potential damage.

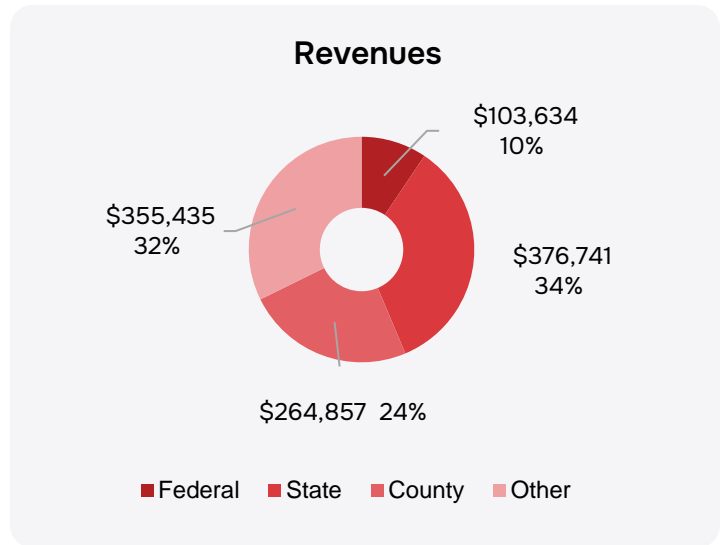
BMR Forage Sorghum Field Day

On August 28, a field day highlighted BMR male sterile forage sorghum as a cost-effective alternative to corn silage. The event fostered community engagement related to innovative practices.

2024 Financials (July)

Financial Support

Federal Revenues	\$103,634
State Revenues	\$376,741
County Revenues	\$264,857
Other	\$355,435
Total	\$1,100,667



Governance

Board of Directors

- Louise Herrick – **President/4-H Program Comm. Rep.**
- Alton Rudgers – **Vice President**
- Shirley Spencer – Treasurer
- Kathy Parker – Secretary
- Carrie Bartholomew – Director
- Chris Smithgall – Director
- Daryl McLaughlin – Director
- John M. Borer – Director
- Eric Dziedzic – Director/Ag Program Comm. Rep.
- Robert Ressler – Director / Ag Program Comm. Rep.
- Leo Vranich – Director/4-H Program Comm. Rep.
- Renee L. Mooneyham – CCE State Extension Specialist
- Vanessa McCormick – Board of Supervisors Rep

4-H Program Committee

- Leo Vranich – **Chairperson/BOD Rep.**
- Brian Bliss – **Vice Chair**
- Louise Herrick – Secretary/BOD Rep.
- Craig Hardie – Committee Member
- Kristen Hess – Committee Member
- McKenna Broughton – Committee Member
- Lisa Roberts – Committee Member Jared Day – Teen Rep.
- Miranda Hoyt – Teen Rep.
- Peyton Mest – Teen Rep.
- Ashton Wilcox – Teen Rep.

Agriculture Program Committee

- Eric Dziedzic – **Chairman/BOD Rep.**
- Daniel Chasey – **Vice Chair**
- Derek Rechberger – Committee Member
- Meghan Burley – Committee Member
- Robert Ressler – Committee Member/BOD Rep.
- JD Pankow – Committee Member
- Jim Kirsch – Committee Member



Staff

Extension Staff



Caron Gala
Lead Executive Director



April Brown
Finance & Ops Coordinator



Alesia Ackerman
Sr. Administrative Assistant



Kathie Ricketson
Finance Assistant



Holly Harwood
4-H Program Manager



Sarah Clark
4-H Educator



Stephanie Czerniak
4-H Educator



Donald Gasiewicz
Ag Program Manager



Emily Wallace
Ag Program Educator

Western Shared Business Network



Kimberly Amey
Lead HR Manager



Jody Finkle
Lead Finance Manager



Jennifer Matthews
Lead IT Manager



Christi Smith
Regional Support & Training Coordinator

NWNY Dairy, Livestock & Field Crops Team



Mike Stanyard
Field Crops & Team Leader



Nancy Glazier
Small Farms



Kaitlyn Lutz, VMD
Bilingual Dairy



John Hanchar
Farm Business



Margaret Quaassdorff
Dairy



Jodie Letham
Field Crops & Soils Specialist



Ashley Knapp
Administrative Assistant

Thank You, Wyoming County CCE Volunteers!

Andrew Ackerman

Barbara Aker

Carolyn Almeter

Annette Anderson

Douglas Anderson

Shawn Baker

Laurie Bark

Jeffrey Beardsley

Emelyn Bell

Melissa Bennett-Frew

Janet Berkemeier

Melissa Blaisdell

Bonnie Bowman

Gary Bray

Sandra Brick

McKenna Broughton

Abigail Broughton

Pete Broughton

Jamie Bucholtz

Melissa Burger

Laura Burkhardt

Megan Burley

Josh Carpenter

Katie Carpenter

Joshua Church

Joshua Clester

Randall Colopy

Lisa Conklin

Kristina Copeland

Larissa Cox

Stephen Cox

Lorri Crater

Cara Crowe

Natalie Cummings

Ann Driver

Kelly Dryja

Karen Duboy

David Duboy

Ashley Fahey

Laura Feldman

Patrick Feldman

Jamie Flint

JoAnn Flynt

BreAnne Forti

Maureen Gardner

Elizabeth George

Cheryl George

Gabrielle Gerard

John W. Glenn

Thomas Green

Deborah Green

Karen Green

Tomi Hackett

Amy Hardie

Craig Hardie

Jenny Harkins

Kelly Harris

Sara Hatch

Warren Henry

Diana Henry

Louise Herrick

William Herrick

Danielle Herrick

Kristen Hess

Robin Hobin

Jamie Hoffman

Mindy Holland

Amy Hootman-Sterry

Gary Hume

Danielle Hurlburt

Jodi Jednat

Kathleen Jellison

Sarah Johnson

Diane Johnson

Shani Jones

Brooke Keicher

Theresa Kelly

Sarah Kingdon

Gillian Koerner

Hans Kunze

Thank You, Wyoming County CCE Volunteers!

Richard Lacey
Gwen Lester
Christine Logsdon
Ray Logsdon
Carolyn Lyons
Michael Mancuso
Elaine Meeder
Jennifer Mest
Kellie Milhollen
Trisha L Morris-Kopinski
Joseph Neamon
Jonathan Nickerson
Sandra Noel
Sara Norton
Jared Norton
Justin Olin
Jessica Olin
Alicia Oyer
Andrew Paddock
Jillian Paddock
Nathan Paddock
Kathleen Parker
Adrienne Penders
Rebekah Perl
Erin Perl
Kelly Pettigrew
Roy Pettigrew
Susan Randall
Cory Reffner
Hollie Remington

Larissa Reynolds
Cassandra Roberts
Lisa Roberts
Lorraine Rucker
Denielle Romance
Marissa Rudgers
Alton Rudgers
Fran Rudgers
Yvonne Russell
Joan Sage
Wayne Sage
Kathryn Sammons
Corrie Sandefer
Diane Santora
Velma Seewaldt
Rachel Siewert
Robert Siewert
Victoria Silvernail
Bryan Smart
Emily Smithgall
Shirley Spencer
Brian Spicer
Cindy Starr
Cynthia Stewart
Suzanne Stopen
Marleah Stout
Chloe Straw
Ashley Swyers
Kay Swyers

Jeffrey Tingue
Rachel Towsley
Beth Turner
Suanne Tuttle
Sara Voss
Ashley Vranich
Emily Wallace
Bryttany Ward
Kortney Webb
Jason Weixlmann
Elexius White
Kelly Wilcox
Julie Winters
Elizabeth Wolcott
Tina Wolcott
Reilly Wolfanger
Sally Woods
Amy Youngers
Scott Zielenieski
Theresa Zielinski
Deborah Zielonka
Heather Zywiczyński

Cornell Cooperative Extension Wyoming County

36 Center Street, Suite B

Warsaw, NY 14569

TEL: 585-786-2251

FAX: 585-786-5148

wyoaming@cornell.edu