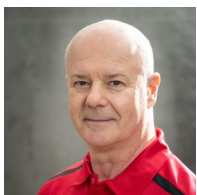


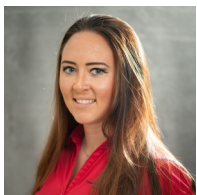
## NWNY Team Specialists



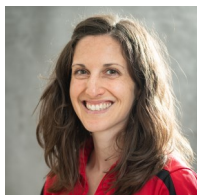
Nancy Glazier  
*Small Farms/Livestock Specialist*  
CCE Genesee County  
Cell 585.315.7746  
nig3@cornell.edu



John Hanchar  
*Farm Business Specialist*  
CCE Livingston County  
Cell 585.233.9249  
jjh6@cornell.edu



Jodi Letham  
*Field Crops & Soils Specialist*  
CCE Livingston County  
Cell 585.689.3423  
jll347@cornell.edu



Kaitlyn Lutz  
*Bilingual Dairy Mgmt. Specialist*  
CCE Ontario County  
Cell 585.689.3114  
kal263@cornell.edu



Margaret Quaassdorff  
*Dairy Management Specialist*  
CCE Genesee County  
Cell 585.405.2567  
maq27@cornell.edu



Mike Stanyard  
*Field Crops Specialist, Team Leader*  
CCE Wayne County  
Cell 585.764.8452  
mjs88@cornell.edu



## Cornell Cooperative Extension

Northwest NY Dairy, Livestock and Field Crops Program

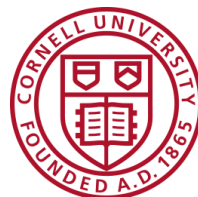
Phone: 585.343.3040 x138

Email: [nwnyteam@cornell.edu](mailto:nwnyteam@cornell.edu)

Website: [www.nwnyteam.cce.cornell.edu](http://www.nwnyteam.cce.cornell.edu)

Mailing Address: 420 East Main Street

Batavia, NY 14020



Cornell Cooperative Extension is an employer and educator recognized for valuing AA/EEO, Protected Veterans, and Individuals with Disabilities and provides equal program and employment opportunities.

## Cornell Cooperative Extension

Northwest NY Dairy, Livestock and Field Crops Program

A partnership between Cornell University and the CCE Associations in these nine counties: Genesee, Livingston, Monroe, Niagara, Ontario, Orleans, Seneca, Wayne and Wyoming.



EDUCATION FOR FARMS  
LARGE AND SMALL



### Dairy & Bilingual Management

- ◆ Dairy Skills Training
- ◆ Dairy Discussion Groups
- ◆ Applied Research
- ◆ Interpretation/Document Translation



### Small Farms / Livestock

- ◆ Pasture Walks
- ◆ Livestock Educational Programs
- ◆ Pasture and Grazing Management
- ◆ Beginning Farmer Education

The Northwest New York Dairy, Livestock and Field Crops Team is a partnership between Cornell University and the Cornell Cooperative Extension Associations in these nine counties:

**Genesee**

**Livingston**

**Monroe**

**Niagara**

**Ontario**

**Orleans**

**Seneca**

**Wayne**

**Wyoming**



### Field Crops / IPM / Soil

- ◆ Grain/Forage Management
- ◆ Insect, Disease/Weed Management
- ◆ Soil Fertility/Nutrient Management
- ◆ Corn, Soybean/Wheat Congresses
- ◆ On-Farm Research & TAG Teams



### Farm Business Management

- ◆ Dairy Farm Business Summary Program
- ◆ Economic Analysis
- ◆ Family Business Transition
- ◆ Farm Financial Management Edu.